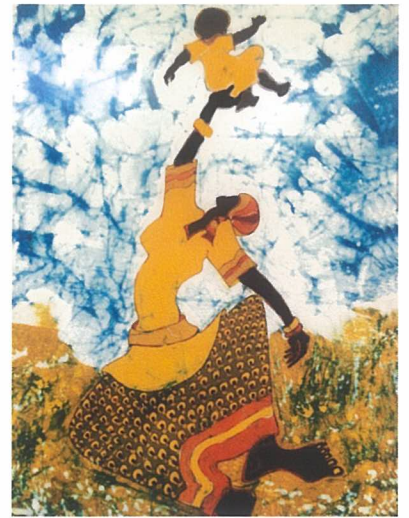


# GRANDMOTHERING SUPPORT GROUP

Join a Group of Grandmothers For  
Support, Inquiry, and Nurturing Camaraderie



- Are you surprised by powerful feelings and needs as you become a grandmother?
- Have you noticed intense vulnerability in yourself as the grandparents in your family system jockey for position?
- Would you like support, addressing complex relationship dynamics with adult children, their spouses, and extended family?

WHERE: 405 Chinn Street, Santa Rosa

WHEN: Tuesday evenings or Friday mornings

COST: \$40/session

To register or for more information: 707 573-9575

Facilitated by : Shoshona Pascoe, MFT (MFC35642)



Shoshona has been working with individuals, couples, and families since 1994. As a new grandmother, she has been deeply touched by the heart opening and healing potential that arrive with the baby. She brings warmth and compassion and her own experience raising three children to the group.